



**PRO
LUX**



LASER BEAM 260

Please keep reading
this manual carefully
for further use!

USER MANUAL

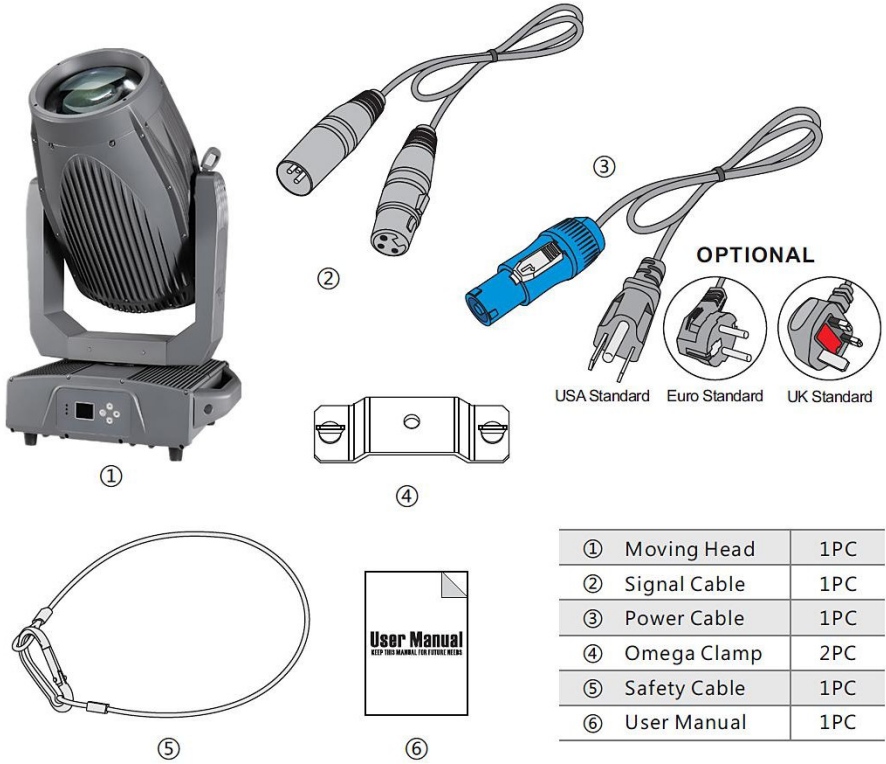
1. UNPACKING

Thank you for choosing our products. For your own safety, please read this manual before installing the device. This manual covers the important information on installation and applications. Please install and operate the fixture with following instructions, make sure the power is off before opening the light or repairing.

Meanwhile, please keep this manual well for future needs.

It is made of a new type of high temperature strength of engineering plastics and cast aluminum casing with nice outlook. The fixture is designed and manufactured strictly following CE standards, complying with international standard DMX512 protocol. It's available independently controlled and linkable with each other for operation. And it is applicable for large-scale live performances, theater, studio, nightclubs and discos.

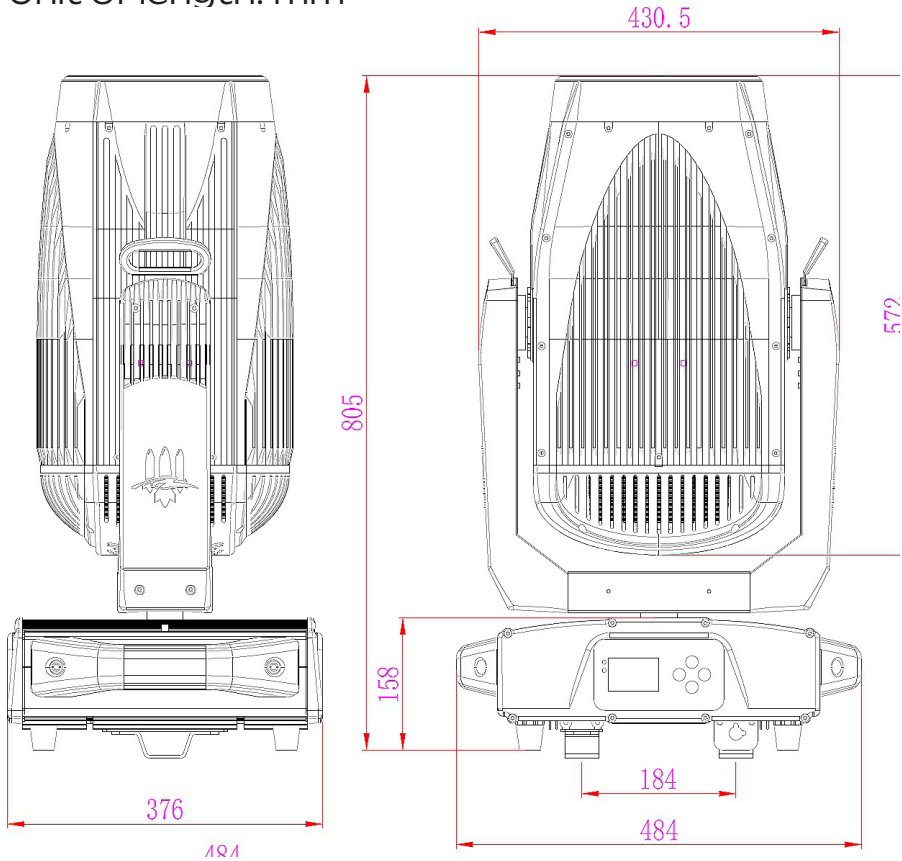
LASER BEAM 260 which features high brightness and stability. Please carefully unpack it when you receive the fixture and check whether it is damaged during the transportation. And please check whether the following items are included inside the box:



①	Moving Head	1PC
②	Signal Cable	1PC
③	Power Cable	1PC
④	Omega Clamp	2PC
⑤	Safety Cable	1PC
⑥	User Manual	1PC

2. FIXTURE SIZE

Unit of length: mm



3. SAFETY INSTRUCTIONS



CAUTION!

Be careful with your operations. With a dangerous voltage you can suffer a dangerous electric shock when touching wires!

This device has left the factory in perfect condition. In order to maintain this condition and to ensure a safe operation, it is absolutely necessary for the user to follow the safety instructions and warning notes written in this user manual.



Important:

Damages caused by the disregard of this user manual are not subject to warranty. The dealer will not accept liability for any resulting defects or problems.

If the device has been exposed to temperature changes due to environmental changes, do not switch it on immediately. The arising condensation could damage the device. Leave the device switched off until it has reached room temperature.

This device falls under protection-class I. Therefore it is essential that the device be earthed.

The electric connection must carry out by qualified person. The device shall only be used with rate voltage and frequency.

Make sure that the available voltage is not higher than stated at the end of this manual.

Make sure the power cord is never crimped or damaged by sharp edges. If this would be the case, replacement of the cable must be done by an authorized dealer.

Always disconnect from the mains, when the device is not in use or before cleaning it. Only handle the power cord by the plug. Never pull out the plug by tugging the power cord.

During initial start-up some smoke or smell may arise. This is a normal process and does not necessarily mean that the device is defective, it should decrease gradually.

Please don't project the beam onto combustible substances.

Fixtures cannot be installed on combustible substances, keep more than 50cm distance with wall for smooth air flow, so there should be no shelter for fans and ventilation for heat radiation.

If the external flexible cable or cord of this luminaire is damaged, it shall be exclusively replaced by the manufacturer or his service agent or a similar qualified person in order to avoid a hazard.

Don't use the fixture in RGBW full on for more than 10 minutes incase of high temperature damage the fixtures.

4. OPERATION INSTRUCTIONS

- The fixture is for beam effect purpose.
- Don't turn on the fixture if it's been through severe temperature difference like after transportation because it might damage the light due to the environment changes. So make sure to operate the fixture until it is in normal temperature.
- This light should be keep away from strong shaking during any transportation or movement.
- Don't pull up the light by only the head, or it might cause damages to the mechanical parts.
- Don't expose the fixture in overheat, moisture or environment with too much dust when installing it. And don't lay any power cables on the floor. Or it might cause electronic shock to the people.
- Make sure the installation place is in good safety condition before installing the fixture.
- Make sure to put the safety chain and check whether the screws are screwed properly when installing the fixture.
- Make sure the lens are in good condition. It's recommended to replace the units if there are any damages or severe scratch.
- Make sure the fixture is operated by qualified personnel who knows the fixture before using.
- Keep the original packages if any second shipment is needed.
- Don't try to change the fixtures without any instruction by the manufacturer or the appointed repairing agencies.
- It is not in warranty range if there are any malfunctions from not following the user

manual to operate or any illegal operation, like shock short circuit, electronic shock, lamp broke, etc.

5. MOUNTING AND INSTALLATION

Cautions: For added protection mount the fixtures in areas outside walking paths, seating areas, or in areas where the fixture might be reached by unauthorized personnel. Before mounting the fixture to any surface, make sure that the installation area can hold a minimum point load of 10 times the device's weight.

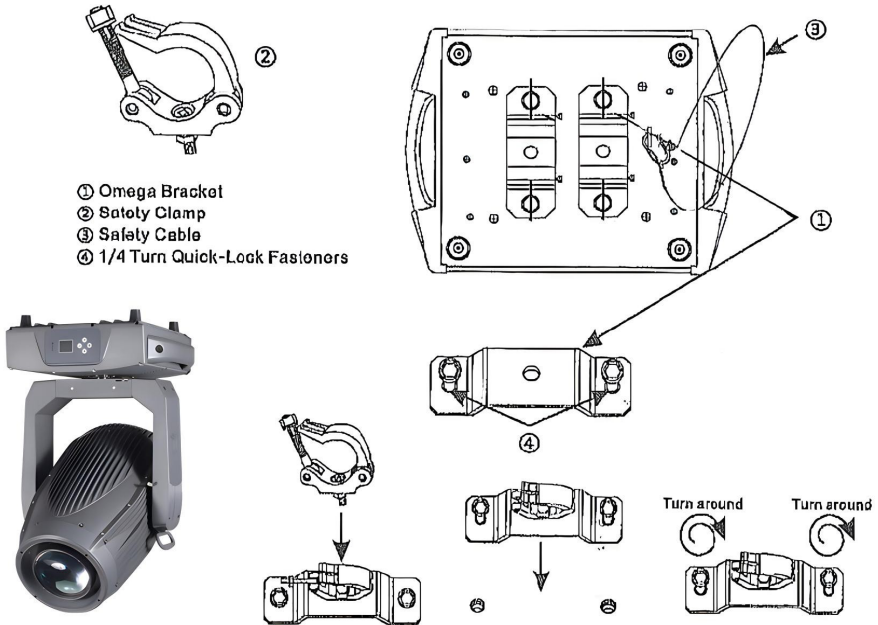
Fixture installation must always be secured with a secondary safety attachment, such as an appropriate safety cable.

Never stand directly below the device when mounting, removing, or servicing the fixture from a periodic safety inspection of all installation material and the fixture. If you lack these qualifications, do not attempt the installation yourself. Improper installation can result in bodily injury.

Be sure to complete all rigging and installation procedures before connecting the main power cord to the appropriate wall outlet.

Clamp Mounting: The LASER BEAM 260 provides a unique mounting bracket assembly that integrates the bottom of the base, and the

safety cable rigging point in one unit (see the illustration below). When mounting this fixture to truss be sure to secure an appropriately rated clamp to the included omega bracket using a M10 screw fitted through the center hole of the “omega bracket”. As an added safety measure be sure to attached at least one properly rated safety cable to the fixture using on of the safety cable rigging point integrated in the base assembly



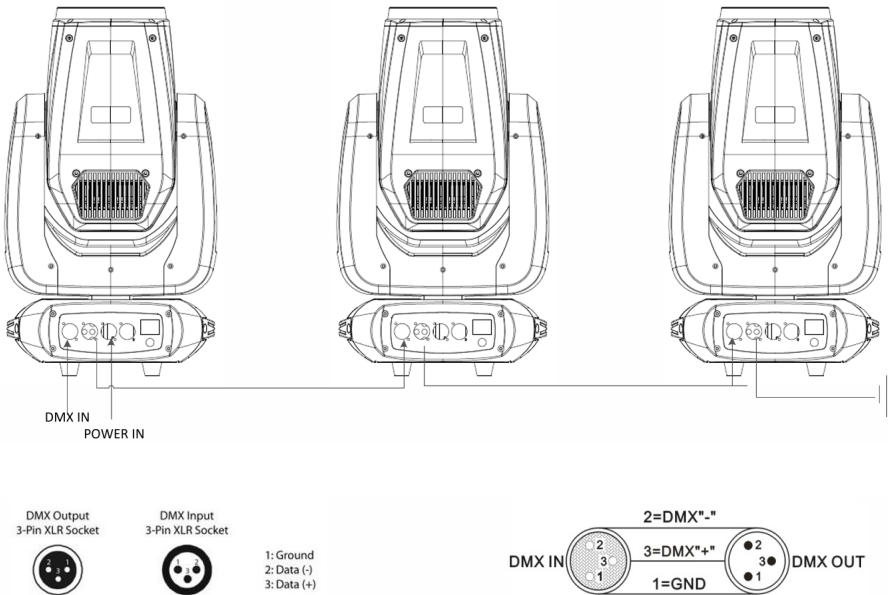
Regardless of the rigging option you choose for your LASER BEAM 260, always be sure to secure your fixture with a safety cable. The fixture provides a built-in rigging point for a safety cable on the hanging bracket as illustrated above. Be sure to only use the designated rigging point for the safety cable and never secure a safety cable to a carrying handle.

6. DMX-512 CONTROL CONNECTIONS

Connect the provided XLR cable to the female 3-pin XLR output of your controller and the other side to the male 3-pin XLR input of the moving head. (5-pin connect way is similar)

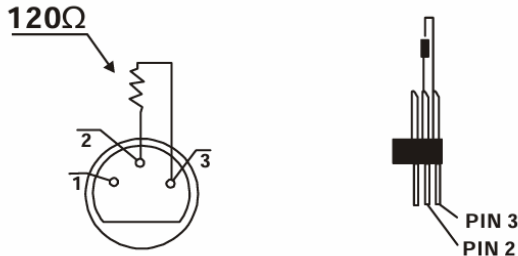
You can chain multiple Moving heads be connected together through serial linking. The cable needed should be two core, screened cable with XLR input and output connectors. Please refer to the diagram below.

DMX-512 connection with DMX terminator



For installations where the DMX cable has to run a long distance or is in an electrically noisy environment, such as in a discotheque, it is recommended to use a DMX terminator.

This helps in preventing corruption of the digital control signal by electrical noise. The DMX terminator is simply an XLR plug with a 120 Ω resistor connected between pins 2 and 3, which is then plugged into the output XLR socket of the last fixture in the chain. Please see illustrations below.



7. DMX CHANNELS

19 CH	15 CH	Function	DMX value	Description
1	1	Pan	0-255	Pan movement
2	2	Pan fine	0-255	Pan fine
3	3	Tilt	0-255	Tilt movement
4	4	Tilt fine	0-255	Tilt fine
5	5	X/Y speed	0-255	Pan/Tilt speed from fast to slow
6	6	Dimmer	0-255	Dimmer
7	7	Strobe	0-5	No function, light on
			6-250	Strobe from slow to fast
			251-255	No function, light on
8	8	Color wheel	0-4	Open

			5-9	Open+Color 1
			10-14	Color 1
			15-19	Color 1+Color 2
			20-24	Color 2
			25-29	Color 2+Color 3
			30-34	Color 3
			35-39	Color 3+Color 4
			40-44	Color 4
			45-49	Color 4+Color 5
			50-54	Color 5
			55-59	Color 5+Color 6
			60-64	Color 6
			65-69	Color 6+Color 7
			70-74	Color 7
			75-79	Color 7+Color 8
			80-84	Color 8
			85-89	Color 8+Color 9
			90-94	Color 9
			95-99	Color 9+Color 10
			100-104	Color 10
			105-109	Color 10+Color 11
			110-114	Color 11
			115-119	Color 11+Color 12
			120-124	Color 12
			125-129	Color 12+Color 13
			130-134	Color 13
			135-139	Color 13+Color 14
			140-144	Color 14
			145-149	Color 14+Open
			150-200	Color anti- clockwise rotates from fast to slow
			201-255	Color wheel clockwise rotates from slow to fast

9	9	Static Gobo wheel	0-4	Open
			5-9	Static gobo 1
			10-14	Static gobo 2
			15-19	Static gobo 3
			20-24	Static gobo 4
			25-29	Static gobo 5
			30-34	Static gobo 6
			35-39	Static gobo 7
19 CH	15 CH	Function	DMX value	Description
9	9	Static gobo	40-44	Static gobo 8
			45-49	Static gobo 9
			50-54	Static gobo 10
			55-59	Static gobo 11
			60-64	Static gobo 12
			65-69	Static gobo 13
			70-74	Static gobo 14
			75-79	Static gobo 15
			80-84	Static gobo 16
			85-89	Static gobo 17
			90-94	Static gobo 18
			95-99	Static gobo 19
			100-104	Open shake from slow to fast
			105-109	Static gobo 1 shake from slow to fast
110-114	Static gobo 2 shake from slow to fast			
115-119	Static gobo 3 shake from slow to fast			

			120-124	Static gobo 4 shake from slow to fast
			125-129	Static gobo 5 shake from slow to fast
			130-134	Static gobo 6 shake from slow to fast
			135-139	Static gobo 7 shake from slow to fast
			140-144	Static gobo 8 shake from slow to fast
			145-149	Static gobo 9 shake from slow to fast
			150-154	Static gobo 10 shake from slow to fast
			155-159	Static gobo 11 shake from slow to fast
			160-164	Static gobo 12 shake from slow to fast
			165-169	Static gobo 13 shake from slow to fast
			170-174	Static gobo 14 shake from slow to fast
			175-179	Static gobo 15 shake from slow to fast
			180-184	Static gobo 16 shake from slow to fast

			185-189	Static gobo 17 shake from slow to fast
			190-194	Static gobo 18 shake from slow to fast
			195-199	Static gobo 19 shake from slow to fast
			200-227	Gobo wheel clockwise rotates from slow to fast
			228-255	Gobo wheel anti- clockwise from slow to fast
10	10	Prism	0-127	No function
			128-255	8 facet prism effect
11	11	Prism rotation	0-127	Prism angle adjustment
			128-190	Prism clockwise rotates from fast to slow
			191-192	Stop
			193-255	Prism anti- clockwise rotates from slow to fast
12	12	Frost	0-127	No function
			128-255	Frost effect
13	13	Colorful wheel	0-127	No function
			128-255	Colorful wheel effect
14	14	Focus	0-255	Focus
15	15	Reset	0-25	No function
			26-76	Head reset
			77-127	Pan/Tilt reset
			128-255	All reset

16		Reversed	0-255	Reversed channel, no function
17		Color Speed	0-255	Color wheel speed from fast to slow
18		D speed	0-255	Dimmer, frost,prism speed from fast to slow
19		Gobo Speed	0-255	Gobo wheel speed from fast to slow

8. DISPLAY INSTRUCTION

THE CODE TO ACTIVATED DISPLAY IS "UP-DOWN-UP-DOWN"

Main menu	Submenu	Level 3	Description
Setting	Run Mode	DMX	DMX mode
		Sence	Sence mode
		Sound	Sound activated mode
		AUTO	Auto-Run mode
	DMX Address	001-512	DMX address setting
	Channel Mode	15CH	15 channel mode
		19CH	19 channel mode
	Invert Pan	ON/OFF	Pan reverse
	Invert Tilt	ON/OFF	Tilt reverse
	Pan-Tilt Swap	ON/OFF	Pan/Tilt exchange
	Pan-Tilt Encoder	ON/OFF	Pan/Tilt reposition On/ Off
	DMX Signal	KEEP	No DMX signal mode
		CLEAR	
	Linear Color	ON	In Linear color on, you can adjust the color wheel percentage,such as 30% color1+70% color2
		OFF	

	Scene Set	Scene Select	Scene mode
		Scene Time	Scene lasting time
		Auto Run	On/Off
	
	Scene Default	OK/ Cancel	
Load Default	OK/ Cancel		
Man	Pan	0-255	Manual control of each channel
	Pan Fine	0-255	
	.	0-255	
	.	0-255	
	Reset	0-255	
Sys	Sys information		Code is "UP-UP-DOWN-DOWN"
180°			Display reverse 180 degree
CH/EN			Language

9. KEY FEATURES

- Voltage: AC100V-240V 50/60HZ
- Light source: 260W Laser mould
- Power consumption: 550W
- Beam angle: 0.8 degree
- Channel: 15/19 two DMX channel mode
- Color: 14 colors + open
- Gobo: 19 gobos + open
- Strobe: 0-25 times/second
- Pan: 540 degree + 16 bit fine

- Tilt :270 degree+16 bit fine
- Display: LCD display
- Prism: 8 facet prism
- Frost: With frost+6 colors honeycomb wheel
Focus: Electric focus
- IP rate: IP65
- N.W: 38KG
- G.W: 44KG
- Carton size: 93*60*51

10. MAINTENANCE AND CLEANING

The following points have to be considered during the inspection:

1. All screws for installing the devices or parts of the device have to be tightly connected and must not be corroded.
2. There must not be any deformations on the housing, color lenses, fixations and installation spots (ceiling, suspension, trussing).
3. Mechanically moved parts must not show any traces of wearing and must not rotate with unbalances.
4. The electric power supply cables must not show any damage, material fatigue or sediments.

Further instructions depending on the installation spot and usage have to be adhered by a skilled installer and any safety problems have to be removed.



CAUTION!

Disconnect from mains before starting maintenance operation.

In order to make the lights in good condition and extend the life time, we suggest a regular

cleaning to the lights.

1. Clean the inside and outside lens each week to avoid the weakness of the lights due to accumulation of dust.
2. Clean the fan each week.
3. A detailed electric check by approved electrical engineer each three month, make sure that the circuit contacts are in good condition, prevent the poor contact of circuit from overheating.

We recommend a frequent cleaning of the device. Please use a moist, lint- free cloth. Never use alcohol or solvents. There are no serviceable parts inside the device. Please refer to the instructions under “Installation instructions”. Should you need any spare parts, please order genuine parts from your local dealer